

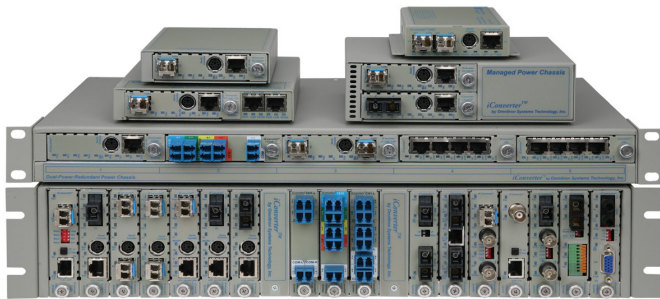
iConverter 10FL/T **10BASE-T to 10BASE-FL Managed Ethernet Media Converter**

The iConverter 10FL/T managed media converters are members of the modular iConverter product family, and provide 10BASE-T copper to 10BASE-FL fiber conversion.

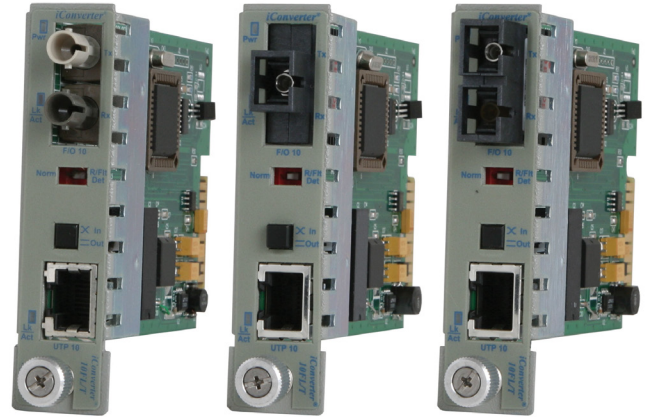
The iConverter 10FL/T models support multimode and single-mode dual fiber with ST, SC and LC connectors; and single-mode single-fiber with SC connectors. The RJ-45 port supports 10BASE-T in either Half or Full-Duplex mode. A UTP crossover switch eliminates the need for a crossover cable and facilitates connectivity to network equipment such as hubs, switches and workstations.

The 10FL/T features user-selectable Link Propagate and Remote Fault Detection modes to facilitate quick fault detection, isolation and reporting.

iConverter 10FL/T modules are hot-swappable and can be mounted in a 19-Module (2U high) or 5-Module (1U high) rack-mountable chassis (19-inch or 23-inch) with any combination of redundant AC, 24VDC or 48VDC power supplies. They can also be mounted in a 2-Module AC or 18 to 60VDC powered chassis, or in a 1-Module AC or DC powered chassis.



The iConverter Multi-Service Platform consists of Network Interface Devices, T1/E1 multiplexers, CWDM multiplexers and managed media converters that combine to deliver Carrier Ethernet and TDM services over fiber or CWDM wavelengths. This flexible architecture supports a wide variety of configurations for scalable and reliable fiber connectivity in Service Provider and Enterprise networks.



KEY FEATURES

- The iConverter 10/FLT is an IEEE 802.3 compatible 10BASE-T copper to 10BASE-FL fiber converter
- Supports multimode, single-mode dual fiber with ST, SC and LC connectors, and single-mode single-fiber with SC connectors
- RJ-45 port automatically supports Half or Full-Duplex 10Mbps Ethernet
- UTP crossover switch eliminates the need for a crossover cable
- User-selectable link fault detection modes facilitate quick fault detection, isolation and reporting
- LED displays for immediate visual status of each port
- Modules are hot-swappable in 19-Module, 5-Module, 2-Module or 1-Module chassis
- Management is available with the addition of a management module to the chassis
- SNMP management via NetOutlook® provides real-time port and module status information, remote parameter configuration and trap notification
- Commercial (0 to 50°C) and wide (-40 to 60°C) temperature ranges
- Lifetime Warranty and free 24/7 Technical Support

SPECIFICATIONS

Description	<i>iConverter 10FL/T</i> 10BASE-T Copper to 10BASE-FL Fiber Media Converter	
Standard Compliances	IEEE 802.3	
Regulatory Compliances	UL, CE, FCC Class A, NEBS Level 3, RoHS2, WEEE, REACH	
Frame Size	Unlimited	
Port Types	Copper:	10BASE-T (RJ-45)
	Fiber:	10BASE-FL (ST, SC, LC)
Cable Types	Copper:	EIA/TIA 568A/B, Cat 5 UTP and higher
	Fiber:	Multimode: 50/125µm, 62.5/125µm Single-mode: 9/125µm
DC Power Requirements	DC Input: (Backplane)	3.3VDC, 1.0A @ 3.3VDC
Dimensions	W: 0.85" x D: 4.5" x H: 2.8" L: 21.6 mm x B: 114.3 mm x H: 71.1 mm	
Weight	8 oz.; 226.8 grams	
Temperature	Commercial:	0 to 50°C
	Wide:	-40 to 60°C
	Storage:	-40 to 80°C
Humidity	5 to 95% (non-condensing)	
Altitude	-100m to 4,000m	
MTBF (hrs)	830,000	
Warranty	Lifetime warranty and 24/7/365 free Technical Support	

MANAGEMENT

The iConverter 10FL/T can be used in managed or unmanaged applications. Management provides remote configuration, monitoring and trap notification. Management of the 10FL/T is accomplished by installing an iConverter Management Module (NMM2) or Network Interface Device (NID) in the same chassis.

The Management Module can be accessed via SNMP, Telnet, and serial port. The 10FL/T can be managed with Omnitron's intuitive, graphic-oriented NetOutlook SNMP Management Software or third party SNMP management software. Management via the Telnet and the serial interfaces have an easy-to-use, menu-driven interface.

The management software can override the physical DIP-switch settings such as Link Propagate or Remote Fault Detection. Other parameters include module type and model, hardware and software revisions, serial numbers and a user-defined identifier.

The iConverter 10FL/T supports SNMP trap notification for the monitoring and notification of different network events. Specific events that generate traps include module insertion and removal, and port link-up and link-down. Trap monitoring of specific events can be selectively enabled or disabled by the network management software.

ORDERING INFORMATION

Fiber Type	Distance	Connector Type			Tx Lambda (nm)	Rx Lambda (nm)	Min. Tx Power (dBm)	Max. Tx Power (dBm)	Min. Rx Power (dBm)	Max. Rx Power (dBm)	Min. Attenuation (dB)	Link Budget (dB)
		ST	SC	LC								
MM/DF	2km	8300-0	8302-0	-	850	850	-21	-11	-31	-11	-	10
MM/DF	5km	8300-1	-	-	1310	1310	-24	-14	-31	-14	-	7
SM/DF	30km	8301-1	8303-1	8307-1	1310	1310	-15	-8	-31	-8	-	16
SM/DF	60km	8301-2	8303-2	8307-2	1310	1310	-5	0	-31	-3	3	26
SM/DF	120km	-	8303-3	8307-3	1550	1550	-5	0	-31	-3	3	26
SM/SF ¹	20km	-	8310-1	-	1310	1550	-15	-5	-30	-3	-	15
SM/SF ¹	20km	-	8311-1	-	1550	1310	-15	-5	-30	-3	-	15
SM/SF ¹	40km	-	8310-2	-	1310	1550	-8	0	-30	-3	3	22
SM/SF ¹	40km	-	8311-2	-	1550	1310	-8	0	-30	-3	3	22

¹ When using single-fiber (SF) media converter models, the Tx wavelength on one end has to match the Rx wavelength on the other.

For wide temperature (-40 to 60°C), add a "W" to the end of the model number. Contact Omnitron for other configurations and extended temperature (-40 to 75°C) models.